

BD PureWick™ Urine Collection System



Indications: The PureWick™ Urine Collection System is to be used with the PureWick™ External Catheters which are intended for non-invasive urine output management.

Contraindications: Do not use the PureWick™ Urine Collection System with PureWick™ Female External Catheters on individuals with urinary retention.

Warnings: Do not use the PureWick™ Female External Catheter with bedpan or any material that does not allow for sufficient airflow. To avoid potential skin injury, never push or pull the PureWick™ Female External Catheter against the skin during placement or removal. Never insert the PureWick™ Female External Catheter into vagina, anal canal, or other body cavities. Discontinue use if an allergic reaction occurs. After use, this product may be a potential biohazard. Dispose of in accordance with applicable local, state and federal laws and regulations.

Precautions: Not recommended for patients who are: Agitated, combative, or uncooperative and might remove the PureWick™ Female External Catheter. Having frequent episodes of bowel incontinence without a fecal management system in place. Experiencing skin irritation or breakdown at the site. Experiencing moderate/heavy menstruation and cannot use a tampon. Do not use barrier cream on the perineum when using the PureWick™ Female External Catheter. Barrier cream may impede suction. Proceed with caution in patients who have undergone recent surgery of the external urogenital tract. Always assess skin for compromise and perform perineal care prior to placement of a new PureWick™ Female External Catheter. Maintain suction until the PureWick™ Female External Catheter is fully removed from the patient to avoid urine backflow.

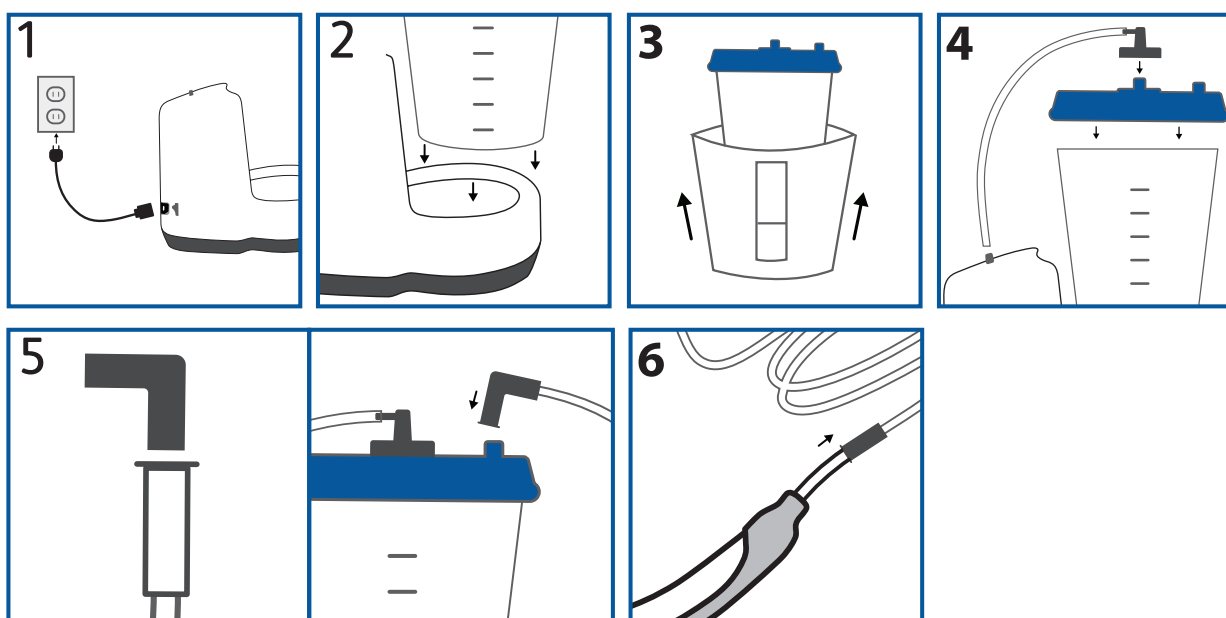
Safety and Warnings: Always unplug PureWick™ Urine Collection System before cleaning or when not in use. **Do not immerse the PureWick™ Urine Collection System in water.** As with most electrical devices, electrical parts in this system are electrically live even when the power is off. To reduce the risk of electric shock, if the PureWick™ Urine Collection System falls into water, unplug immediately. **Do not reach into the water to retrieve it.** Contains small parts that may cause choking. Keep out of reach of children. Keep cords and tubing out of the reach of children to avoid the risk of strangulation. Discontinue use if an allergic reaction occurs. Not recommended for users who are experiencing skin irritation or skin breakdown in device contact areas. **WARNING:** This device should not be used in oxygen rich environments or in conjunction with flammable anesthetics. If the PureWick™ Urine Collection System is dropped or tipped over spilling urine, unplug the unit and carefully inspect for loose or damaged parts before resuming use. Contact Customer Support at 1-888-201-1586 if any damage is observed. The pump tubing connecting the PureWick™ Urine Collection System to the collection canister may experience light condensation inside the tube. This is not unusual and does not affect function. However, if urine or water has streamed into the pump, discontinue use and contact Customer Support at 1-888-201-1586. Although the canister can hold up to 2000cc (mL), the urine should be emptied regularly from the collection canister before volume reaches 1800cc (mL). Failure to empty canister before urine overflow may cause damage to the PureWick™ Urine Collection System and is not covered under the warranty. It is important that the port connections be connected correctly for proper operation of the PureWick™ Urine Collection System. Use of this equipment next to or stacked with other equipment should be avoided because it could result in improper operation. If such use is necessary, this equipment and the other equipment should be observed to verify that they are operating normally. Portable radio frequency (RF) communications equipment (including peripherals such as antenna cables and external antennas) should be used no closer than 12 inches (30cm) to any part of the PureWick™ Urine Collection System, including cables specified by the manufacturer. Otherwise, degradation of the performance of this equipment could result. Use only PureWick™ Urine Collection System accessories with this device. Incompatible parts or accessories can result in degraded performance and will void the warranty. Do not use accessories past expiration date indicated on package labeling. Use only the PureWick™ Urine Collection System A/C power cord with the device. Use of an alternate consumer style A/C power adapter or an extension cord may cause damage to device and electrical shock or injury and will void the warranty. Do not place PureWick™ Urine Collection System or its cord across walkways creating a tripping hazard. For PW200: The battery cells used in this device may present a fire or chemical hazard. To minimize the risk of damaging the battery inside the PureWick™ Urine Collection System, do not use the device outside the indicated operating temperature range of 41°F - 104°F (5°C - 40°C). The battery is not intended to be replaced; replacement could result in a hazard. **To reduce the risk of electrical shock or injury, do not disassemble this unit. No modification of this equipment is allowed.**

Directions for use

BD PureWick™ Urine Collection System and BD PureWick™ Female External Catheter

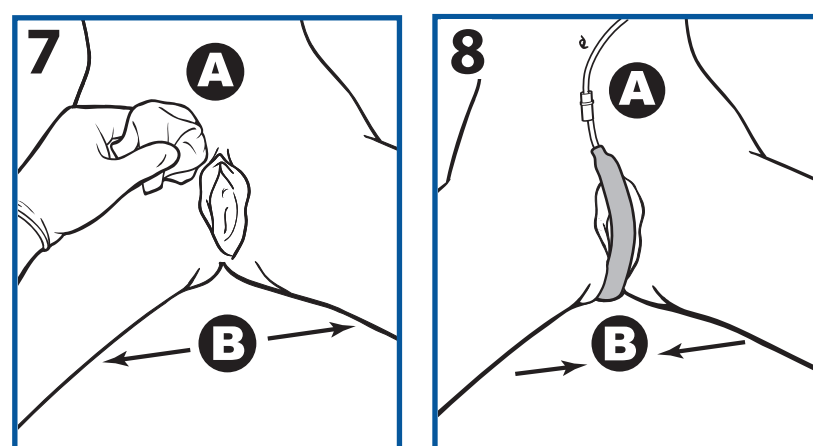
BD PureWick™ Urine Collection System setup

1. Plug power cord into device outlet and into the A/C power outlet. Note: Make sure the power switch is turned off.
2. Place collection canister in the base and press down firmly on the lid of the device making sure lid is sealed.
3. Optional: Slip privacy cover onto the canister prior to placing canister into base.
4. Attach pump tubing (short tube) to the BD PureWick™ Urine Collection System connector port and the connector port on the collection canister lid.
5. Attach the elbow connector to the collector tubing (long tube) and connect elbow connector to the connector port on collection canister lid.
6. Connect other end of collector tubing (long tube) to a BD PureWick™ External Catheter.



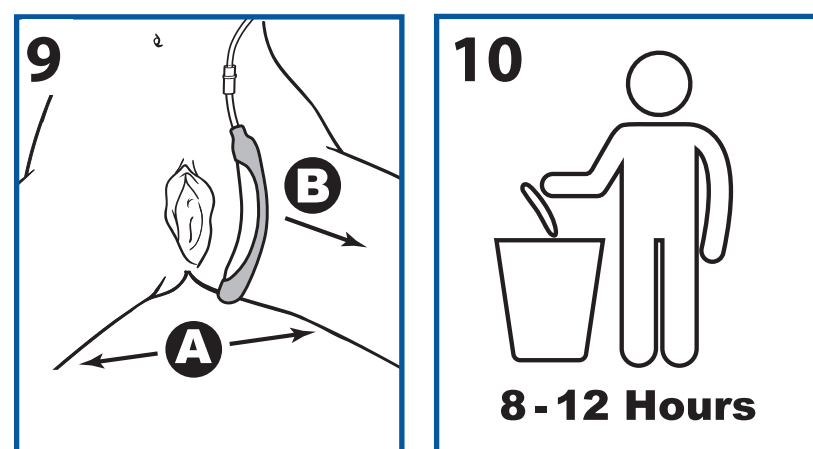
BD PureWick™ Female External Catheter placement

7. **A.** Perform perineal care and assess skin integrity.
B. Separate legs, gluteus muscles and labia. Palpate by using pubic bone as anatomical marker.
8. **A.** With soft gauze side facing patient, align distal end at gluteal cleft.
B. Gently tuck soft gauze side between separated gluteus and labia.



BD PureWick™ Female External Catheter removal and maintenance

9. Fully separate the legs, gluteus, and labia.
A. To avoid potential skin injury upon removal, gently pull the BD PureWick™ Female External Catheter directly outward.
B. Ensure suction is maintained to draw urine out of the collector tubing and into the collection canister before removing the BD PureWick™ Female External Catheter.
10. Replace at least every 8-12 hours or if soiled with feces or blood. Assess skin for compromise and perform perineal care prior to placement of a new BD PureWick™ Female External Catheter.



Always follow the directions for use.

Available for patients and their carers for educational purposes. Always consult your Healthcare Professional regarding treatment options. The BD PureWick™ Urine Collection System is intended for use only with the BD PureWick™ Female External Catheter.

Becton Dickinson Pty Ltd T/A Bard Australia Pty Ltd. Toll free: 1800 257 232
Becton Dickinson Limited, New Zealand Toll free: 0508 742 273

bd.com/anz

BD, the BD Logo and PureWick are trademarks of Becton Dickinson and Company or its affiliates.
© 2024 BD. All rights reserved. BD-96202

